

# Stainless steel twin wheel heavy-duty castors

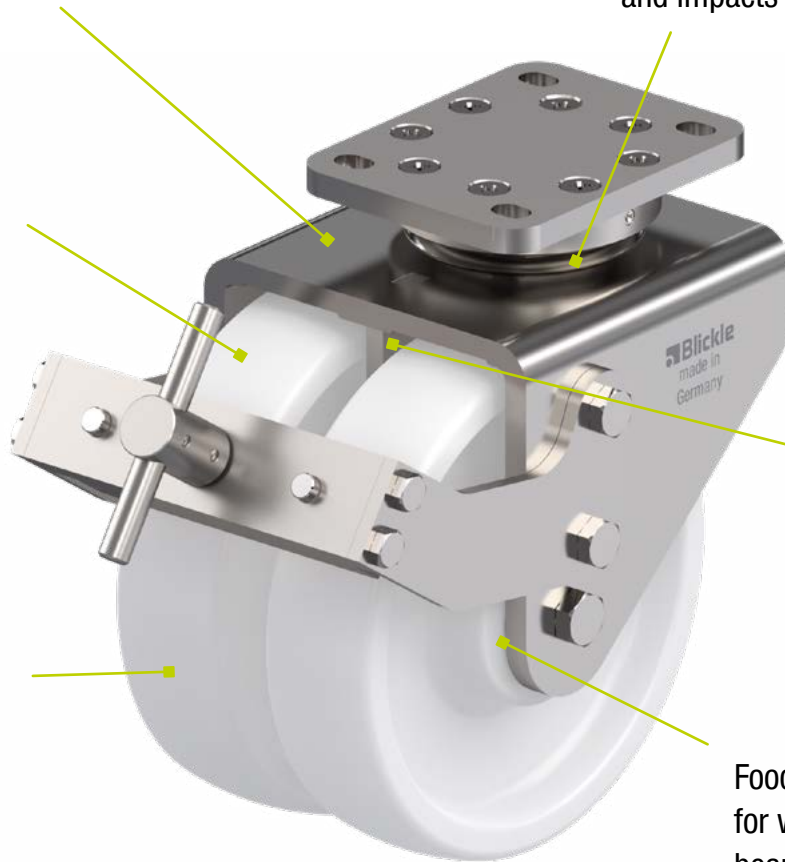


# The new stainless steel twin wheel heavy-duty castors from Blickle: Robust. Hygienic. Durable.

Smooth stainless steel surface for easy cleaning

Hardened precision fork head, particularly resistant to knocks and impacts

Optionally available with electrically conductive nylon wheels to protect the operator and transported goods, and to reduce dirt adhesion



Gap dimensions based on common standards in the food industry

Very low rolling and swivel resistance, highly abrasion-resistant

Food-safe lubricants (H1) for wheel and swivel head bearings

## FIELDS OF APPLICATION



Chemistry and petrochemistry



Pharmaceutical industry



Food and beverage industry

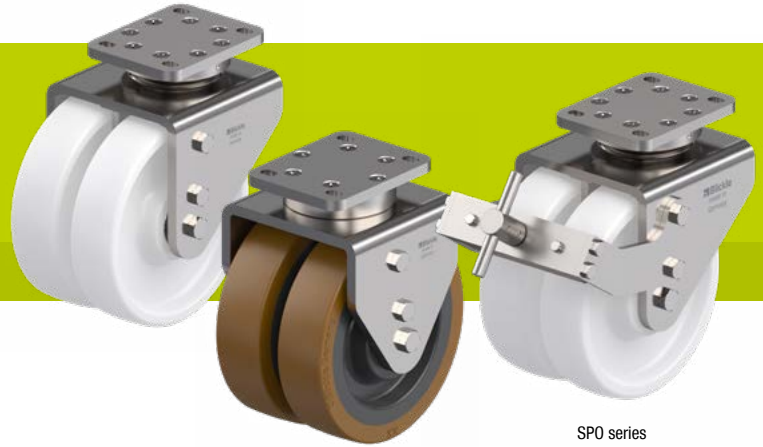


Shipping industry

## LPDX/BPDX series

### Stainless steel twin wheel heavy-duty castors with top plate

1,450–1,800 kg



SPOB series

SPO series

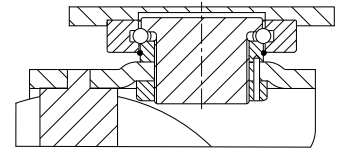


**Bracket:** LPDX/BPDX series

- high-quality chromium-nickel steel (1.4301/ AISI 304), stainless steel, vibration-ground finishing
  - all parts including axle material are corrosion-resistant
- swivel bracket:
- four-point ball bearing for optimal absorption of vertical and horizontal forces
  - hardened precision fork head made from corrosion-resistant steel (1.4034 / AISI420)
  - excellent swivel characteristics, particularly resistant to impact and shocks
  - grease nipple

**Wheels:**

- SPO series
- high-quality nylon 6, impact resistant, hardness 70 Shore D, extremely robust heavy-duty version, colour natural white, non-marking
- SPOB series
- tread: high-quality polyurethane elastomer Blickle Besthane®, hardness 92 Shore A, colour brown, non-marking, non-staining, corrosion and hydrolysis-resistant
  - wheel centre: high-quality nylon 6, impact resistant, extremely robust heavy-duty version, colour black



Swivel castors	Fixed castors	Swivel / fixed castors with „Radstop“ brake	Wheel Ø [mm]	Wheel width [mm]	Load capacity [kg]	Bearing type	Total height [mm]	Plate size [mm]	Bolt hole spacing [mm]	Bolt hole Ø [mm]	Offset swivel castor [mm]
<b>SPO series</b>											
LPDX-SPO 201XK-3		LPDX-SPO 201XK-3-RAH	200	2 x 50	1,800	ball bearing	245	140 x 110	105 x 75-80	11	65
	BPDX-SPO-201XK-3	BPDX-SPO-201XK-3-RAH	200	2 x 50	1,800	ball bearing	245	140 x 110	105 x 75-80	11	
<b>SPOB series</b>											
LPDX-SPOB 200XK-3		LPDX-SPOB 200XK-3-RAH	200	2 x 50	1,450	ball bearing	245	140 x 110	105 x 75-80	11	65
	BPDX-SPOB-200XK-3	BPDX-SPOB-200XK-3-RAH	200	2 x 50	1,450	ball bearing	245	140 x 110	105 x 75-80	11	

### Versions / options



	with foot guard	electrically conductive version, non-marking grey
<b>Product code suffix</b>	<b>-FSX</b>	<b>-ELS</b>
Available for	all (with wheel brake upon request)	SPO series

# Our world of stainless steel castors.

Our wide range of over 30,000 standard products provides the perfect solution for almost any situation. All of our products are high-quality, maintenance-free, available quickly and have a long service life, as you would expect from Blicke.

There are also unique solutions in the field of stainless steel castors that set new standards in the field of corrosion protection, hygiene, durability and safety. With us you will definitely find something suitable for your requirements. If you can't find it in our extensive standard range, we can work together to develop a tailored product for you: Customising is one of our strengths. **Because our mission is customer satisfaction.**



1 009254